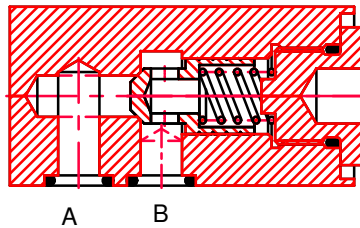
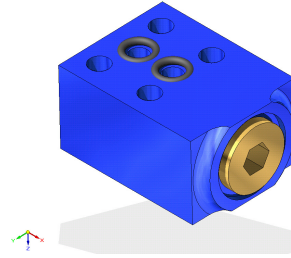


CMD NRS/11.11	Non Return valve type NRS			LOGO
				Replaces : NRS 10.09

Features :

- For Subplate mounting
- Leakage-free in one direction
- Various cracking pressure, optional (see ordering code)

Symbols :  
(without spring)



Ordering code

NRS				*
-----	--	--	--	---

Nominal size 06	=06
Nominal size 10	=10
Nominal size 20	=20
Nominal size 30	=30

Further details to specify
Revision status index

0=	Without spring	} Cracking pressure
1=	1 Bar (Standard)	
2=	2 Bar	
3=	3 Bar	
5=	5 Bar	

Technical data (for other sizes and special application, please contact mktg@cmhydraulics.com)

Maximum operating pressure	bar	315			
Cracking pressure	bar	0,1,2,3 & 5			
Maximum flow	Size	06	10	20	30
	L/min.	18	60	250	450
Pressure fluid		Mineral oil (HL,HLP) to DIN 51 524; Fast bio-degradable pressure fluids to VDMA 24 568;HTEG (rape seed oil); HEPG (polyglycol); HEES (synthetic ester); other fluids on request			
Pressure fluid - temperature range	°C	- 30 to + 80			
Viscosity range	mm ² /s	2.8 to 500			
Degree of contamination		Maximum permissible degree of contamination of the fluid is to NAS 1638 class 9.			
Weight	Size	06	10	20	30
	Kg.	0.3	0.9	2.6	9

CMD
NRS/11.11

Non Return valve type NRS

LOGO

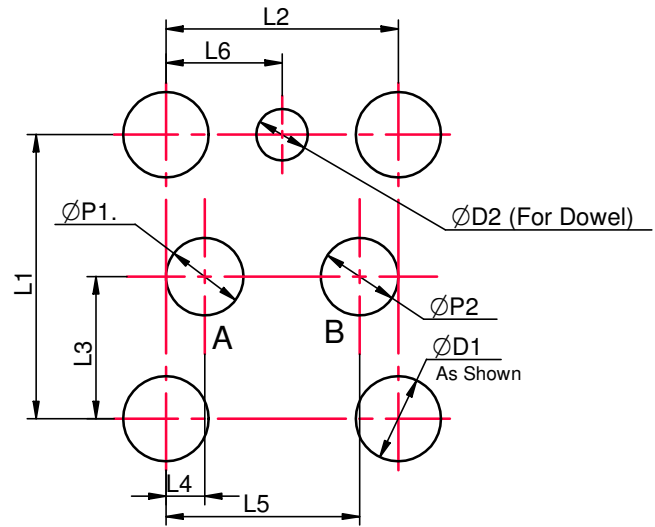
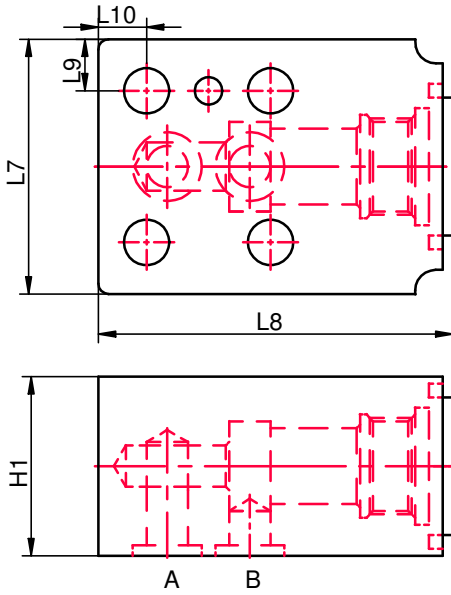
Replaces : NRS 10.09

Size : 06 to 30

up to 315 bar

up to 450 L/min.

CM Hydro Systems Pvt Ltd



Size	L1	L2	L3	L4	L5	L6	ØP1	ØP2	ØD1	ØD2	L7	L8	L9	L10	H1	
06	22	18	11	3	15	9	6	6	6.6	4	37	52	7.5	7	26	
10	36	33	18	6	27	16.5	10	10	9	4	55	79	9.5	9	38	
20	50	55	25	10	45	27.5	20	20	11	6.3	70	103	10	10	55	
30	75	85	37.5	20	65	42.5	30	30	14	7	105	162	15	15	82	