

CMD
NRP-I/11.11

**Pilot operated Non Return
Valve Type NRP-I**

LOGO

Replaces : NRP-I 10.09

Size : 10,20 & 30

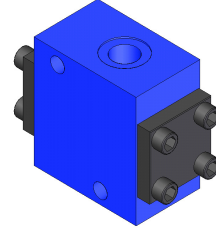
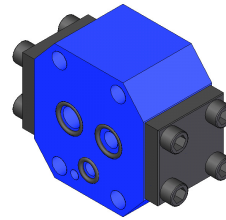
up to 315 bar


up to 350 L/min.

CM Hydro Systems Pvt Ltd

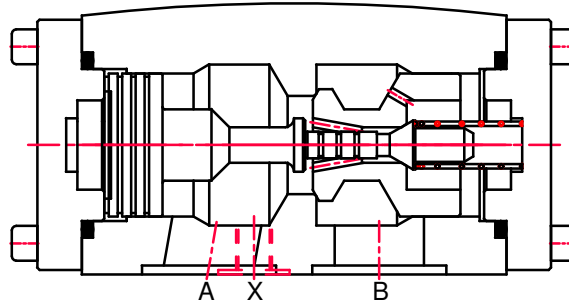
Features :

- Seat type with decompression poppet
- Internal drain construction
- Free flow in one direction
- Pilot flow in another direction
- Various cracking pressure, optional (see ordering code)



Symbol : 

Sectional view



Ordering code

NRP-I 10 T 1 *

Pilot operated Non Return valve
(Internal drain)

Nominal size 10 =10
Nominal size 20 =20
Nominal size 30 =30

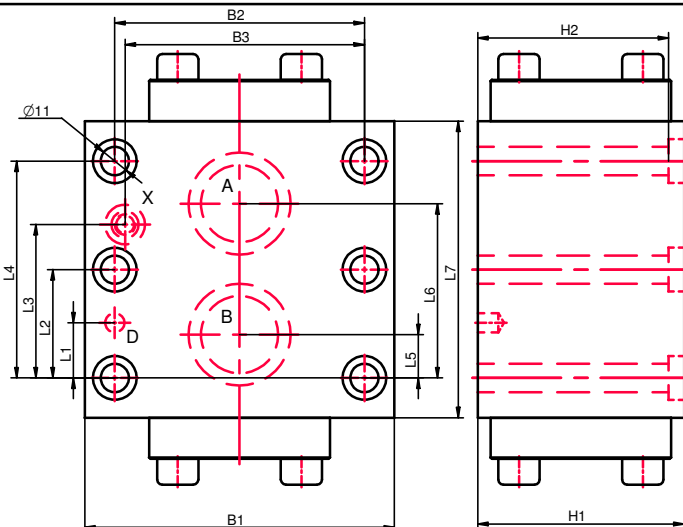
For subplate mounting =S
For threaded connection =T

Further details to specify

Revision status index

0= Without spring
1= Standard
2=
3=
5= } Cracking pressure in bar

Subplate mounting body

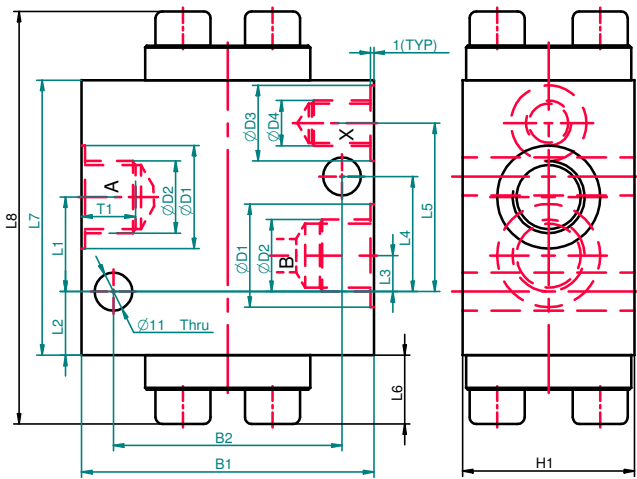


	Size 10	Size 20	Size 30
L1	31.8	44.5	31.8
L2	-	-	42.1
L3	21.5	20.6	24.6
L4	42.9	60.3	84.2
L5	35.8	49.2	67.5
L6	7.2	11.1	16.7
L7	116	135	173

	Size 10	Size 20	Size 30
L8	18.5	17.5	15.5
B1	85	100	120
B2	66.7	79.4	96.8
B3	58.8	73	92.8
H1	47	57	80
H2	-	-	74

CMD NRP-I/11.11		Pilot operated Non Return Valve Type NRP-I			LOGO
Replaces : NRP-I 10.09		Size : 10,20 & 30	up to 315 bar	up to 350 L/min.	CM Hydro Systems Pvt Ltd

Threaded port body



Size	L1	L2	L3	L4	L5	L6	L7	L8
10	27.5	18.5	10.5	33.5	49	18	80	116
20	36.7	17.3	13.5	50.5	67.7	20	95	135
30	54.5	15.5	20.5	73.5	89.5	29	115	173

Size	B1	B2	ØD1	ØD2	ØD3	ØD4	H1	T1
10	66.5	85	30	G 1/2	G 1/4	22	47	14
20	79.5	100	44	G 1	G 1/4	22	57	18
30	97	120	60	G 1 1/2	G 1/4	22	80	22

Technical data (for other sizes and special application, please contact mktg@cmhydraulics.com)

Mounting style		Threaded port or subplate			
Mounting position		optional			
Cracking pressure		bar	0,1,2,3 & 5		
Maximum operating pressure		bar	315		
Flow Direction		From A to B free, from B to A through pilot			
Control Areas	Size	10	20	30	
	Main Poppet	3.1 cm ²	8.0 cm ²	12.5 cm ²	
	Pilot piston	0.7 cm ²	3.8 cm ²	6.1 cm ²	
	Decompression Poppet	0.2 cm ²	0.5 cm ²	0.7 cm ²	
Maximum flow	Size	10	20	30	
	L/min.	80	160	350	
Pressure fluid		Mineral oil (HL,HLP) to DIN 51 524; Fast bio-degradable pressure fluids to VDMA 24 568;HTEG (rape seed oil); HEPG (polyglycol); HEES (synthetic ester); other fluids on request			
Pressure fluid - temperature range		°C	- 30 to + 80		
Viscosity range		mm ² /s	2.8 to 500		
Degree of contamination		Maximum permissible degree of contamination of the fluid is to NAS 1638 class 9.			
Weight	Size	10	20	30	
	Subplate	Kg	2.5	4.1	8.5
	Threaded body	Kg	2.4	4.0	8.4