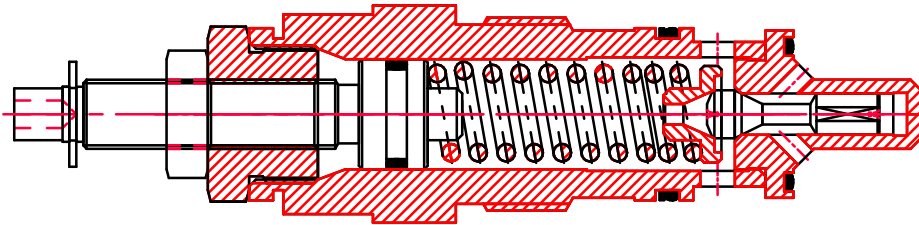
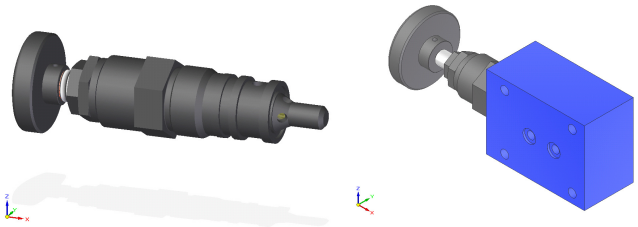
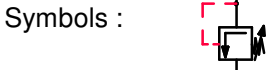
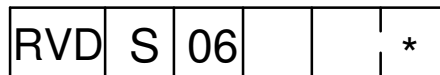


| | | | | | |
|----------------------|--|------------------------------|---------------|------------------|--------------------------|
| CMD RVD/11.11 | | Relief valve type RVD | | | LOGO |
| Replaces : RVD 10.09 | | Size : 06 to 20 | up to 315 bar | up to 450 L/min. | CM Hydro Systems Pvt Ltd |

- Features :
- For Threaded connections
 - With Cavity
 - For Subplate mountings
 - Adjustable Pressure settings
(see ordering code)



Ordering code



| | |
|----------------------|----|
| Set Screw Adjustment | =S |
| Hand Knob Adjustment | =H |

| | |
|-----------------|-----|
| Nominal size 06 | =06 |
| Nominal size 10 | =10 |
| Nominal size 20 | =20 |

Further details to specify

| | |
|-------|-------------------------------|
| 25 = | Pr. 25 Bar |
| 50 = | Pr. 50 Bar |
| 100 = | Pr. 100 Bar |
| 200 = | Pr. 200 Bar |
| 315 = | Pr. 315 Bar |
| 400 = | Pr. 400 Bar |
| 630 = | Pr. 630 Bar(Only for 10 Size) |

K= Cartridge Type (See Page 2)
T= Threaded port body (See Page 2)
S= Subplate Connections (See Page 3)

Technical data (for other sizes and special application, please contact mktg@cmhydraulics.com)

| | | | | | |
|------------------------------------|--------------------|---|-----|-----|--|
| Maximum operating pressure | bar | 400 Bar, 630 Bar | | | |
| Operating pressure | bar | 25,50,100,200,315,400 | | | |
| Maximum flow | Size | 06 | 10 | 20 | |
| | L/min. | 50 | 120 | 250 | |
| Pressure fluid | | Mineral oil (HL,HLP) to DIN 51 524; Fast bio-degradable pressure fluids to VDMA 24 568;HTEG (rape seed oil); HEPG (polyglycol); HEES (synthetic ester); other fluids on request | | | |
| Pressure fluid - temperature range | °C | - 30 to + 80 | | | |
| Viscosity range | mm ² /s | 2.8 to 500 | | | |
| Degree of contamination | | Maximum permissible degree of contamination of the fluid is to NAS 1638 class 9. | | | |
| Weight | Size | 06 | 10 | 20 | |
| | Kg. | 0.4 | 0.5 | 1.0 | |

CMD
RVD/11.11

Relief valve type RVD

LOGO

Replaces : RVD 10.09

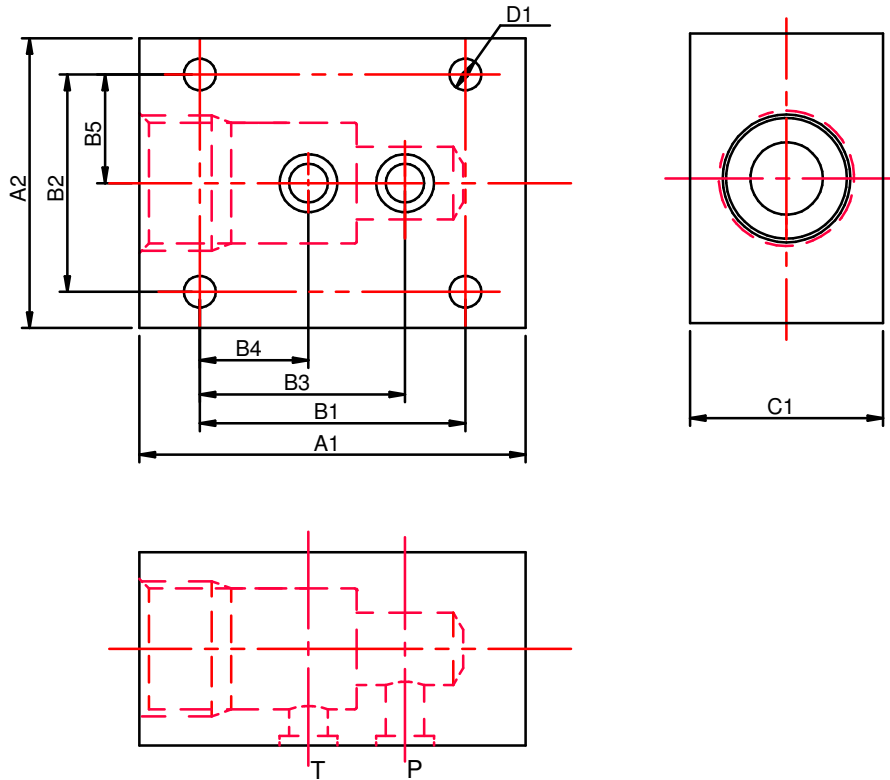
Size : 06 to 20

up to 315 bar

up to 450 L/min.

CM Hydro Systems Pvt Ltd

Subplate Type



| Size | A1 | A2 | B1 | B2 | B3 | B4 | B5 | ØD1 | C1 |
|------|-----|-----|-----|----|----|----|------|-----|----|
| 06 | 80 | 60 | 55 | 45 | 40 | 20 | 22.5 | 6.6 | 40 |
| 10 | 100 | 80 | 70 | 60 | 49 | 21 | 30 | 9 | 60 |
| 20 | 135 | 100 | 100 | 70 | 65 | 34 | 35 | 9 | 70 |

CMD
RVD/11.11

Relief valve type RVD

LOGO

Replaces : RVD 10.09

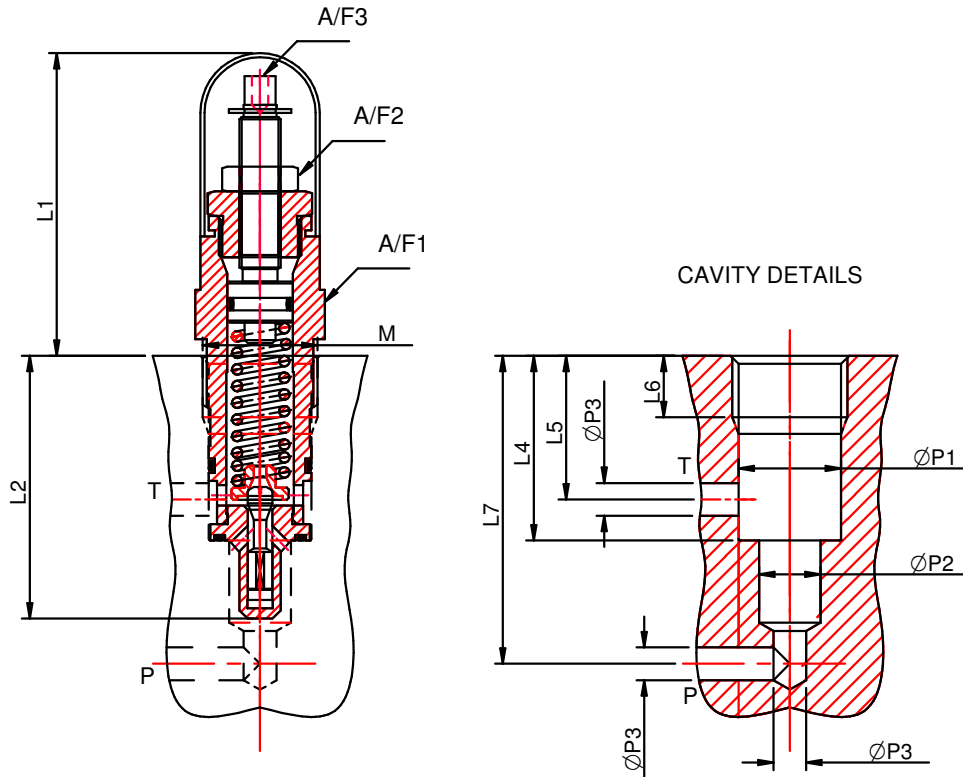
Size : 06 to 20

up to 315 bar

up to 450 L/min.

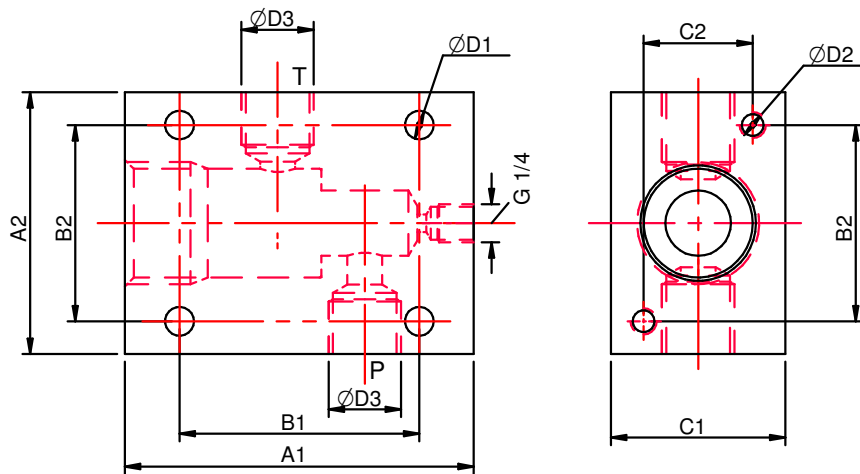
CM Hydro Systems Pvt Ltd

Cartridge Type



| Size | A/F1 | A/F2 | A/F3 | M | L1 | L2 | L4 | L5 | L6 | L7 | ØP1 | ØP2 | ØP3 |
|------|------|------|------|---------|----|-----|----|----|----|----|-----|-----|-----|
| 06 | 30 | 16 | 4 | M28x1.5 | 75 | 64 | 45 | 35 | 19 | 55 | 25 | 15 | 8 |
| 10 | 36 | 24 | 6 | M35x1.5 | 85 | 77 | 52 | 41 | 23 | 69 | 32 | 19 | 10 |
| 20 | 46 | 19 | 6 | M45x1.5 | 65 | 106 | 70 | 54 | 27 | 92 | 40 | 24 | 20 |

Threaded Port Body Type



| Size | A1 | A2 | B1 | B2 | ØD1 | ØD2 | ØD3 | C1 | C2 |
|------|-----|-----|-----|----|-----|-----------|----------|----|----|
| 06 | 80 | 60 | 55 | 45 | 6.6 | M4x10 Dp. | 1/4" BSP | 40 | 25 |
| 10 | 100 | 80 | 70 | 60 | 9 | M8x20 Dp. | 1/2" BSP | 60 | 40 |
| 20 | 135 | 100 | 100 | 70 | 9 | M8x20 Dp. | 1" BSP | 70 | 50 |