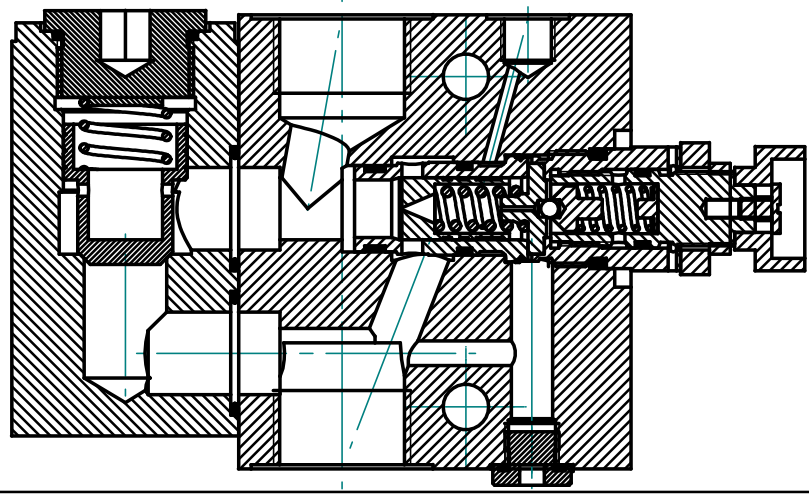
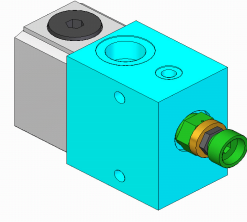


CMD FVP/11.11		Counter Balance Valve type FVP			LOGO
Replaces : NIL		Size : 20	315 bar	Upto200 L/min.	CM Hydro Systems Pvt Ltd

- Features :**
- Modular construction
 - Available in different sizes
 - Available in different pressure ranges



Ordering code

FVP	S	20	T	E	100	*
-----	---	----	---	---	-----	---

Set screw type Size =20 Threaded <input type="checkbox"/> Internal pilot I <input type="checkbox"/> External pilot E	=S	Further details to specify Revision status index 25 = Pr. 25 Bar 50 = Pr. 50 Bar 100 = Pr. 100 Bar 200 = Pr. 200 Bar 315 = Pr. 315 Bar
---	----	--

Technical data (for other sizes and special application, please contact mktg@cmhydraulics.com)

Maximum operating pressure	bar	315 Bar
Operating pressure	bar	25, 50, 100, 200, 315
Maximum flow	L/min.	NG 20=200
Pressure fluid		Mineral oil (HL,HLP) to DIN 51 524; Fast bio-degradable pressure fluids to VDMA 24 568;HTEG (rape seed oil); HEPG (polyglycol); HEES (synthetic ester); other fluids on request
Pressure fluid - temperature range	°C	- 30 to + 80
Viscosity range	mm ² /s	2.8 to 500
Degree of contamination		Maximum permissible degree of contamination of the fluid is to NAS 1638 class 9.
Weight	Kg.	NG 20= 8Kg.

CMD
FVP/11.11

Counter Balance Valve type FVP

LOGO

Replaces : NIL

Size : 20

315 bar

200 L/min.

CM Hydro Systems Pvt Ltd

Mounting Details

