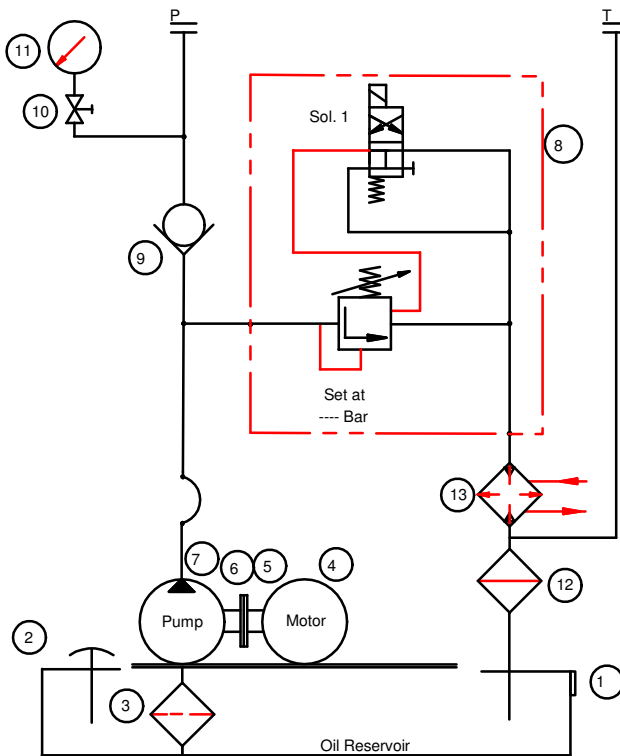
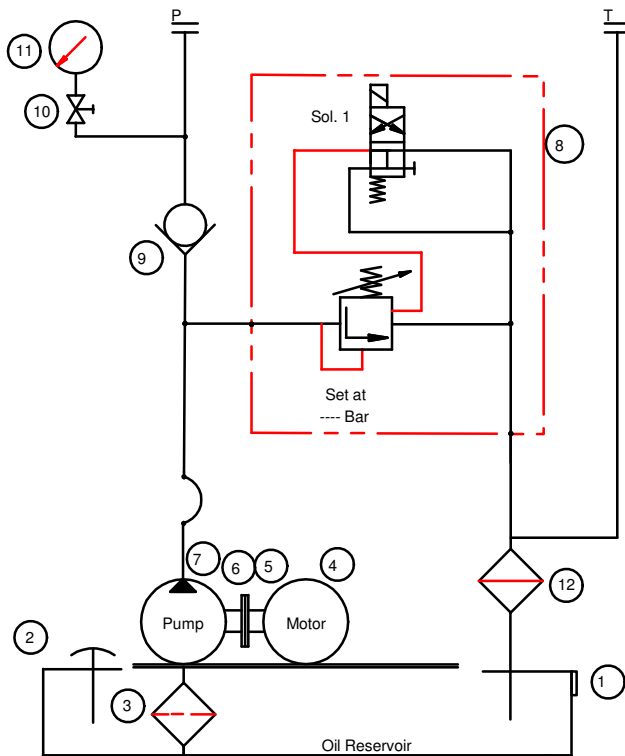


Typical Circuit :



With Heat Exchanger



With out Heat Exchanger

1. Oil Level Indicator
2. Filler Breather
3. Suction Strainer
4. Electrical Motor
5. Bell Housing
6. Coupling
7. Hydraulic Pump
8. Unloading block with DC Valve
9. Non Return valve
10. Gauge Isolator
11. Pressure Gauge
12. Return Line Filter
13. Heat Exchanger

| | | |
|-----------------------|--|--|
| CMD HPUM/11.11 | Hydraulic Power Units-Mini type HPU-M | |
| Replaces : HPUM/03.10 | | |

Technical data (for other sizes and special application, please contact mktg@cmhydraulics.com)

| | | |
|------------------------------------|--------------------|---|
| Maximum operating pressure | bar | 700 Bar (Refer Table) |
| Reservoir | Ltrs | 20, 40, 60 |
| Power Supply | | 415Ø10 V 50 Hz AC No. of Poles 4 IP 55 Protection |
| Pressure fluid | | Mineral oil (HL,HLP) to DIN 51 524; Fast bio-degradable pressure fluids to VDMA 24 568;HTEG (rape seed oil); HEPG (polyglycol); HEES (synthetic ester); other fluids on request |
| Return line Filters capacity | Microns | 25 |
| Pressure fluid - temperature range | °C | - 30 to + 80 |
| Viscosity range | mm ² /s | 2.8 to 500 |
| Degree of contamination | | Maximum permissible degree of contamination of the fluid is to NAS 1638 class 9. |

Motor Selection table (in HP)

| Pr. Range Flow (CC)/Rev (Bar) | Upto 60 | 60 ~ 150 | 150 ~ 300 | 300 ~ 500 | 500 ~ 700 |
|-------------------------------------|---------|----------|-----------|-----------|-----------|
| 1.5 | 0.5 | 1 | 2 | 3 | 5 |
| 2.0 | 0.5 | 2 | 3 | 5 | - |
| 2.5 | 1 | 2 | 3 | 5 | - |
| 3.0 | 1 | 2 | 5 | - | - |
| 3.5 | 1 | 3 | 5 | - | - |
| 4.0 | 1 | 3 | 5 | - | - |
| 4.5 | 1.5 | 3 | 5 | - | - |
| 5.0 | 1.5 | 3 | 5 | - | - |
| 5.5 | 1.5 | 5 | - | - | - |
| 7.0 | 2 | 5 | - | - | - |
| 8.0 | 2 | 5 | - | - | - |
| 8.5 | 2 | 5 | - | - | - |