

CMD
TCNRM/11.11

Throttle cum Non Return Valve Modularity TCNRM

LOGO

Replaces : TCNRM 10.09

Size : 06 & 10

up to 315 bar

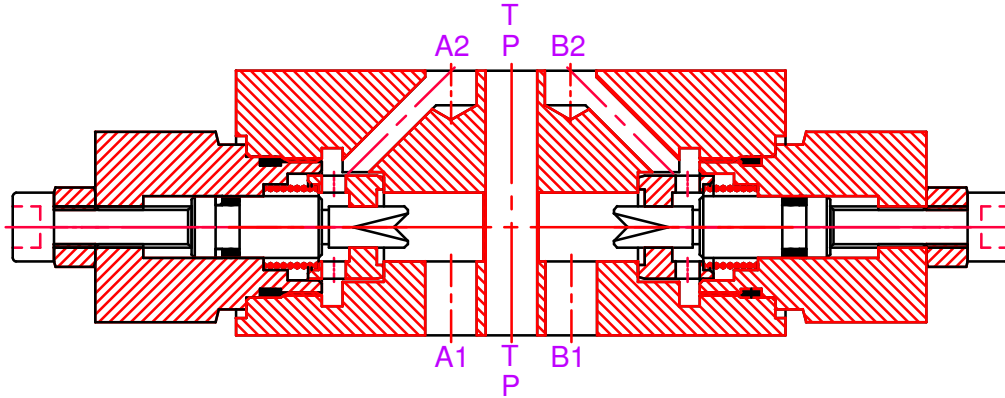
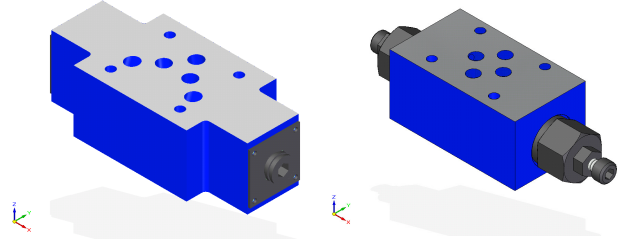
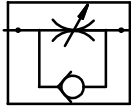
up to 100 L/min.

CM Hydro Systems Pvt Ltd

Features :

- Modular construction (Subplate mounting)
- Material Steel & SS
- Fine throttling adjustments

Symbols :



Ordering code

TCNRM 06 AB 1 *

Nominal size 06
Nominal size 10

=06
=10

Throttling Port A & B
Throttling Port A
Throttling Port B

=AB
=A
=B

Further details to specify

Revision status index

- 0= Cracking pressure 0 bar
 - 1= Cracking pressure 1 bar
 - 2= Cracking pressure 2 bar
 - 3= Cracking pressure 3 bar
 - 5= Cracking pressure 5 bar
- } Check Valve
} Cracking pressure

Technical data (for other sizes and special application, please contact mktg@cmhydraulics.com)

Maximum operating pressure	bar	315 Bar	
Maximum flow	Size	06	10
	L/min.	40	100
Pressure fluid	Mineral oil (HL,HLP) to DIN 51 524; Fast bio-degradable pressure fluids to VDMA 24 568;HTEG (rape seed oil); HEPG (polyglycol); HEES (synthetic ester); other fluids on request		
Pressure fluid - temperature range	°C	- 30 to + 80	
Viscosity range	mm ² /s	2.8 to 500	
Degree of contamination	Maximum permissible degree of contamination of the fluid is to NAS 1638 class 9.		
Weight	Size	06	10
	Kg.	1.1	3.7

CMD
TCNRM/11.11

Throttle cum Non Return Valve Modularity TCNRM

LOGO

Replaces : TCNRM 10.09

Size : 06 to 25

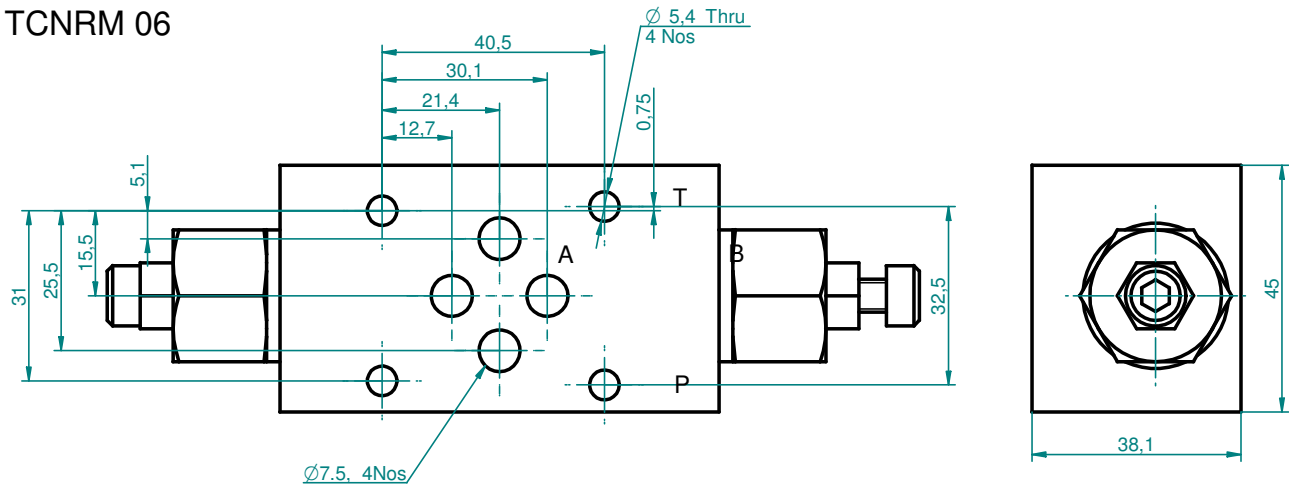
up to 315 bar

up to 100 L/min.

CM Hydro Systems Pvt Ltd

Dimensional Details

TCNRM 06



TCNRM 10

